



Greenspace Flex

RS378B P24 930 PSU-E MB M70

Greenspace Flex, 24 W, 930 warm white, 30°, Finger-protected

GreenSpace Flex is performance portfolio dedicated to Hospitality segment for GC/GM countries. With modular design concept, the light engines and different trims could have multiply of combination to satisfy diversified customer's requirement.

Product data

General Information	
Number of gear units	1 unit
Driver included	Yes
Light source engine type	LED
CE mark	-
Warranty period	3 years
Glow-wire test	Temperature 600 °C, duration 30 s
EU RoHS compliant	Yes

Light Technical	
Luminous Flux	1992 lumen
Correlated Color Temperature (Nom)	3000 K
Luminous Efficacy (rated) (Nom)	83 lm/W
Color rendering index (CRI)	<gt;/>90
Light source color	930 warm white
Optical cover/lens type	-
Luminaire light beam spread	30°

Operating and Electrical	
Input Voltage	220 to 240 V
Line Frequency	50 or 60 Hz

Average CLO power consumption	1905 W
Power Consumption	24 W
Power Factor (Fraction)	0.9
Connection	External connector
Cable	-
Number of products on MCB of 16 A type B	-

Temperature	
Ambient temperature range	-20 to +45 °C

Controls and Dimming	
Dimmable	No
Driver/power unit/transformer	Electronic transformer
Control interface	-
Constant light output	No

Mechanical and Housing	
Housing Material	Aluminum Alloy
Optic material	Polymethyl methacrylate
Optical cover/lens material	-
Fixation material	Aluminum

Greenspace Flex

Housing Color	Dark gray
Optical cover/lens finish	-
Overall length	0 mm
Overall width	0 mm
Overall height	90 mm
Overall diameter	70 mm
Dimensions (Height x Width x Depth)	90 x 0 x 0 mm

Approval and Application

Ingress protection code	IP20 [Finger-protected]
Mech. impact protection code	IK04 [0.5 J standard plus]
Protection class IEC	Safety class II

Initial Performance (IEC Compliant)

Initial chromaticity	SDCM<lt/>3
Luminous flux tolerance	+/-10%
Power consumption tolerance	+/-10%

Over Time Performance (IEC Compliant)

Median useful life L80B50	50000 hour(s)
---------------------------	---------------

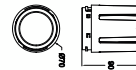
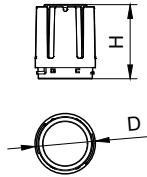
Application Conditions

Maximum dim level	Not applicable
Suitable for random switching	No

Product Data

Full product code	911401721472
Order product name	RS378B P24 930 PSU-E MB M70
Order code	911401721472
Numerator - Quantity Per Pack	1
Numerator - Packs per outer box	36
Material Nr. (12NC)	911401721472
Full product name	RS378B P24 930 PSU-E MB M70

Dimensional drawing



Modular Type	D, mm	H, mm
RS378B P6/P11 M55	55	49
RS378B P15 M55	55	49
RS378B P24 M70	70	90
RS378B P33 M87	87	107
RS378B P42 M102	102	116

