



MASTER LEDtube InstantFit HF T5

Master LEDtube HF 1500mm UO 36W 840 T5

Philips MASTER LEDtube InstantFit T5 integrates a LED light source into a traditional fluorescent form factor. Its unique design creates a perfectly uniform visual appearance which cannot be distinguished from traditional fluorescents. The Philips MASTER LEDtube InstantFit T5 is the ideal solution for customers who have higher light output requirements and want to maximise value over the lifetime. The full energy savings & longer lifetime result in attractive payback times and TCO benefits.

Product data

General Information	
Cap base	G5 [G5]
EU RoHS compliant	Yes
Nominal lifetime (nom.)	60000 h
Switching cycle	50,000X
	Sphere

Light Technical	
Colour Code	840 [CCT of 4,000 K]
Technical Beam Angle (Nom)	160 °
Lamp Luminous Flux 25°C EL (Nom)	5600 lm
Colour Designation	Cool White (CW)
Colour Temperature, horizontal (Nom)	4000 K
Lamp Luminous Efficacy EM (Nom)	155,00 lm/W
Colour consistency	<6
Colour Rendering Index,horiz (Nom)	80
LLMF at end of nominal lifetime (nom.)	70 %

Operating and Electrical	
Input frequency	40000-75000 Hz
Technical Lamp Power (Nom)	36 W
Lamp current (max.)	750 mA
Lamp current (min.)	550 mA
Starting time (nom.)	0.5 s
Warm-up time to 60% light (nom.)	0.5 s
Power factor (nom.)	0.9
Voltage (nom.)	65-75 V

Temperature	
T-ambient (max.)	45 °C
T-ambient (min.)	-20 °C
T storage (max.)	65 °C
T storage (min.)	-40 °C
T-Case maximum (nom.)	75 °C

MASTER LEDtube InstantFit HF T5

Controls and Dimming

Dimmable	No
----------	----

Mechanical and Housing

Lamp Finish	Frosted
Bulb material	Plastic
Product length	1500 mm
Bulb shape	Tube, double-ended

Approval and Application

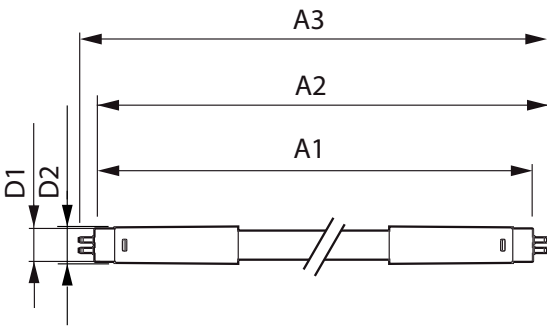
Energy Efficiency Class	D
Energy-saving product	Yes
Approval marks	RoHS compliance CE marking KEMA Keur certificate

Energy consumption kWh/1,000 hours	36 kWh
	415182

Product Data

Full product code	871869670603900
Order product name	Master LEDtube HF 1500mm UO 36W 840 T5
EAN/UPC – product	8718696706039
Order code	929001346202
SAP numerator – quantity per pack	1
Numerator – packs per outer box	10
SAP material	929001346202
SAP net weight (piece)	0.170 kg

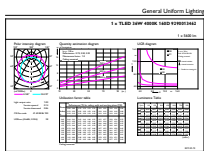
Dimensional drawing



TLED 230V 37-80W 5600lm 160D 4000K G5 ND

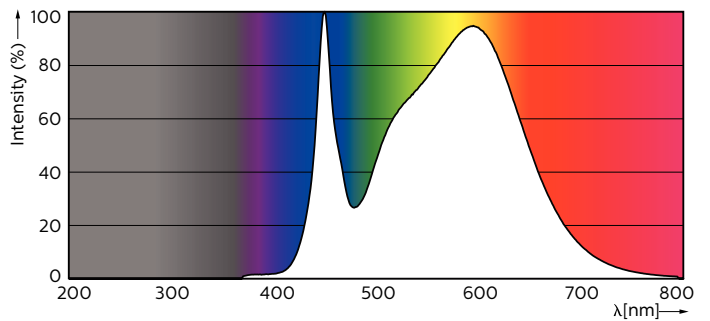
Product	D1	D2	A1	A2	A3
Master LEDtube HF 1500mm UO 36W 840 T5	15.2 mm	21 mm	1447.8 mm	1454.9 mm	1462 mm

Photometric data



General Uniform Lighting
1 x TLED 230V 37-80W 5600lm 160D 4000K G5 ND
Page 11

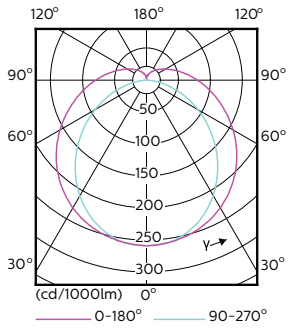
LEDtube 1500mm 36W G5 840 5600lm



LEDtube 1500mm 36W G5 840 5600lm

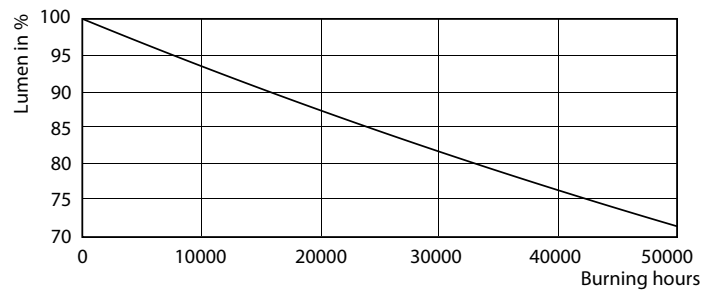
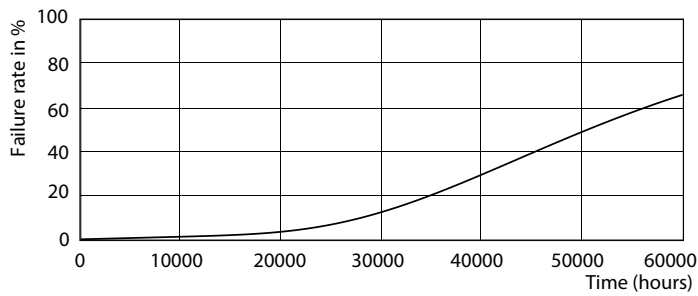
MASTER LEDtube InstantFit HF T5

Photometric data



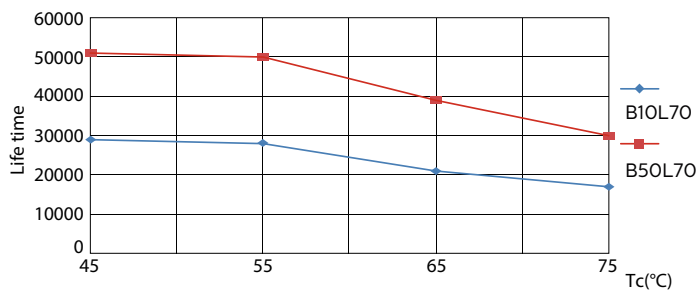
LEDtube 1200mm 26W G5

Lifetime



LEDtube 1500mm 36W G5 5600lm

LEDtube 1500mm 36W G5 5600lm

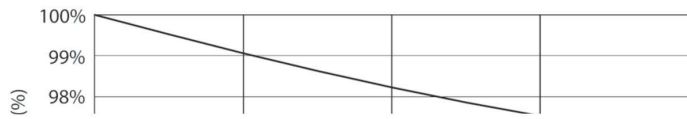


LEDtube 1500mm 36W G5 5600lm

LEDtube 1200mm 26W G5 3900lm

MASTER LEDtube InstantFit HF T5

Lifetime



LEDtube 1500mm 36W G5 5600lm

