



# ZXP399 DMX Controls and Accessories

## ZXP399 Jump 2P DC cable 2m (10 pcs)

Black

The ZXP399 DMX Controls and Wiring Accessories are to be used with our architectural and facade lighting luminaires (UniFlood C, M and G, UniStrip G4, UniEdge, UniDot G2, UniString and UniBar).;DMX Controls include a main controller, stand-alone controller, sub-controllers, DMX amplifier and DMX addressing device.;Main Controller: Industrial computer that can control up to 6,000 DMX universes.;Stand-alone Controller: Fits all medium applications with up to 700 DMX universes.;Wiring accessories include leader and jump cables with male and female IP67 connectors and end-caps.;Addressing Device: Hand-held device that can write DMX addresses to a whole run on-site within minutes.;DMX Amplifier: Compact, IP65 and low-power repeater that can amplify the DMX signal for up 100 metres.

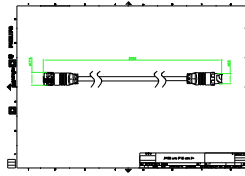
### Product data

| General Information                 |   |
|-------------------------------------|---|
| Colour                              | Black                                     |
| Mechanical and Housing              |   |
| Overall length                      | 2000 mm                                   |
| Dimensions (height x width x depth) | NaN x NaN x 2000 mm (NaN x NaN x 78.7 in) |
| Product Data                        |   |
| Full product code                   | 911401742392                              |

|                                   |                                     |
|-----------------------------------|-------------------------------------|
| Order product name                | ZXP399 Jump 2P DC cable 2m (10 pcs) |
| Order code                        | 911401742392                        |
| SAP numerator – quantity per pack | 1                                   |
| Numerator – packs per outer box   | 1                                   |
| SAP material                      | 911401742392                        |
| SAP net weight (piece)            | 1.850 kg                            |

## ZXP399 DMX Controls and Accessories

### Dimensional drawing



ZXP399

