



# The new generation of energy-saving T5 tube lighting

## MASTER LEDtube InstantFit HF T5

Philips MASTER LEDtube InstantFit T5 integrates a LED light source into a traditional fluorescent form factor. Its unique design creates a perfectly uniform visual appearance which cannot be distinguished from traditional fluorescents. The Philips MASTER LEDtube InstantFit T5 is the ideal solution for customers who have higher light output requirements and want to maximise value over the lifetime. The full energy savings & longer lifetime result in attractive payback times and TCO benefits.

### Benefits

- Reduced operational cost thanks to lower energy consumption
- Lower maintenance cost thanks to 2-3 times longer lifetime than normal fluorescent tubes
- The fastest and easiest way to upgrade existing luminaires to LED technology, with a 100% safe installation process

### Features

- A retrofit replacement for existing T5 lamps on HF ballast installations
- HF compatibility: no wires to replace, no hassle changing drivers; our InstantFit solution works with High Frequency electronic ballasts, making it easy and safe for all installation methods
- Electronic Pin safety: with Philips products you can safely touch the other end-cap when installing the tube. The integrated driver is also safely isolated from touchable parts. Philips LED tubes adhere to all UL and IEC pin safety requirements

### Application

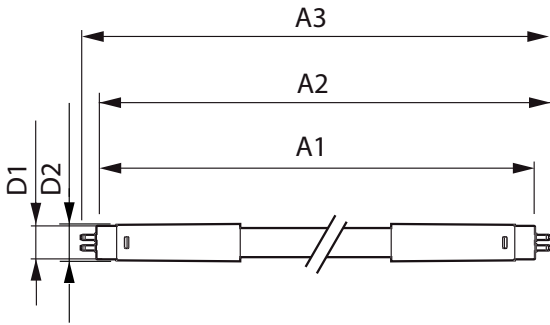
- The ideal solution for demanding applications with a need for extra energy savings: office, school, retail

# MASTER LEDtube InstantFit HF T5

## Versions



## Dimensional drawing



Product	D1	D2	A1	A2	A3
Master LEDtube HF 1500mm UO 36W 840 T5	15.2 mm	21 mm	1447.8 mm	1454.9 mm	1462 mm
Master LEDtube HF 1500mm UO 36W 865 T5	15.2 mm	21 mm	1447.8 mm	1454.9 mm	1462 mm

# MASTER LEDtube InstantFit HF T5

## Approval and Application

Energy Consumption kWh/1000 h	42 kWh
Energy Efficiency Label (EEL)	A++

## Controls and Dimming

Dimmable	No
----------	----

## Operating and Electrical

Input Frequency	40000-75000 Hz
Voltage (Nom)	65-75 V
Power (Rated) (Nom)	36 W
Starting Time (Nom)	0.5 s

## General Information

Cap-Base	G5
Nominal Lifetime (Nom)	50000 h
Switching Cycle	50,000X

## Light Technical

Beam Angle (Nom)	160 °
Colour Rendering Index (Nom)	83
Llmf At End Of Nominal Lifetime (Nom)	70 %
Luminous Flux (Nom)	5600 lm

## Mechanical and Housing

Bulb Shape	Tube, double-ended
------------	--------------------

## Temperature

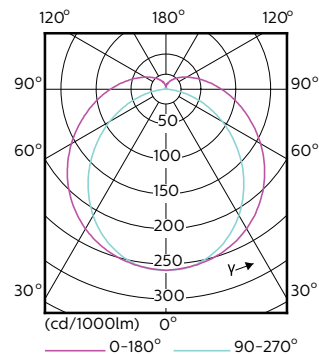
T-Ambient (Max)	45 °C
T-Ambient (Min)	-20 °C
T-Case Maximum (Nom)	45 °C
T-Storage (Max)	65 °C
T-Storage (Min)	-40 °C

## Light Technical

Order Code	Full Product Name	Correlated Colour Temperature	
		Colour Code (Nom)	
929001346202	Master LEDtube HF 1500mm UO 36W 840 T5	840	4000 K
929001346302	Master LEDtube HF 1500mm UO 36W 865 T5	865	6500 K

## Mechanical and Housing

Order Code	Full Product Name	Bulb Finish
929001346202	Master LEDtube HF 1500mm UO 36W 840 T5	-
929001346302	Master LEDtube HF 1500mm UO 36W 865 T5	Frosted



## MASTER LEDtube InstantFit HF T5

